

13 February 2017



Owner/Occupier

Dear Resident

Marlborough Park renews construction works

The paths, playspace, drainage and furniture in Marlborough Park are being renewed. The contract has been awarded to HEB Construction Ltd.

Works on site will commence 27 February and is expected to be completed September 2017, dependent on weather.

Access to the park will be restricted at times during this period so please follow signs in place accordingly. Access to the tennis club and other facilities via the carpark and Archers Road entrance will be maintained throughout the works period.



Sketch of the new playspace at Marlborough Park

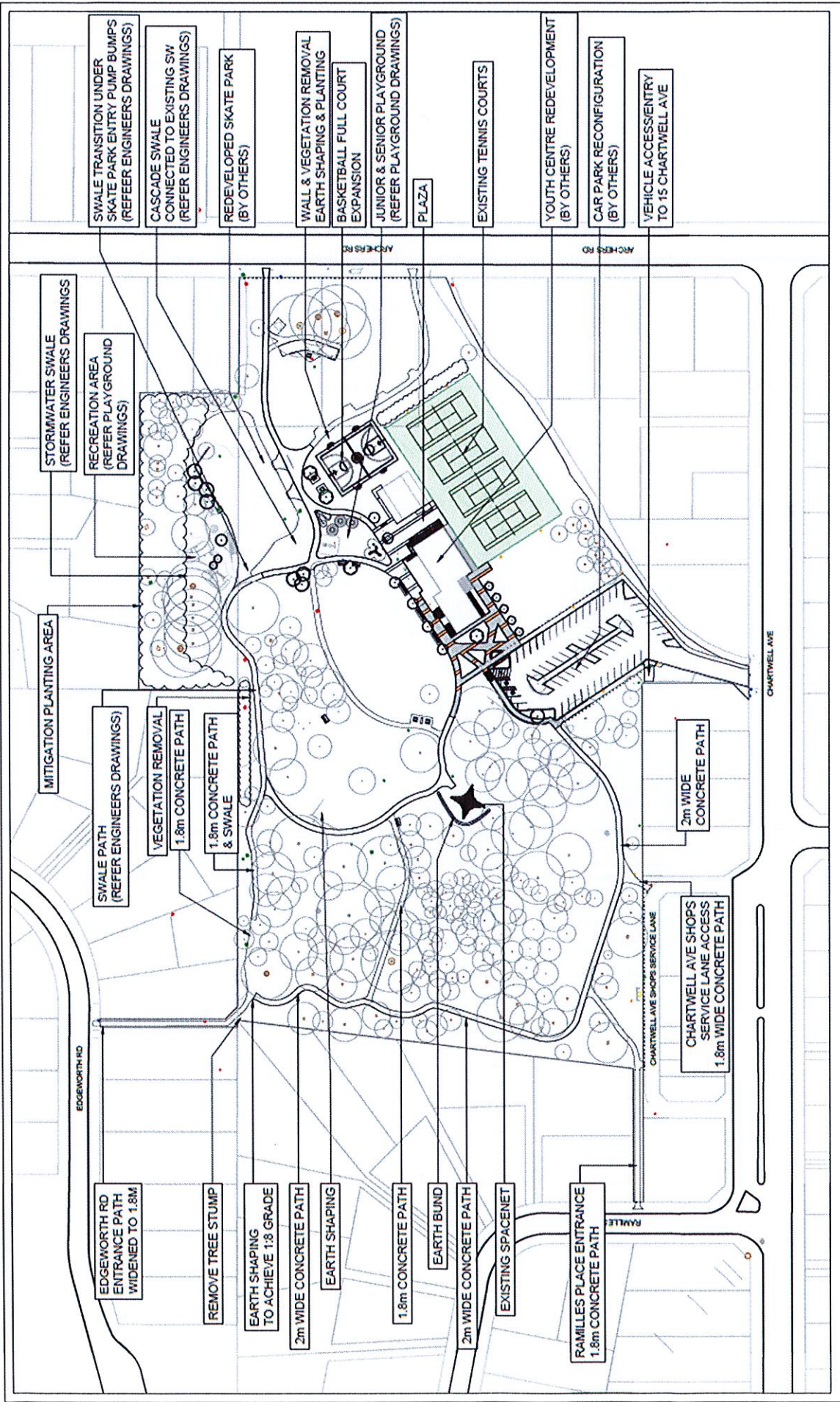
If you have any queries regarding this project, please contact:

Julie Crabb, Phone 021 221 5958 or email Julie.Crabb@aucklandcouncil.govt.nz

Yours sincerely

A handwritten signature in blue ink, appearing to read 'Julie'.

Julie Crabb
Principal Project Manager
Project Delivery | Community Facilities



SWALE TRANSITION UNDER SKATE PARK ENTRY PUMP BUMPS (REFER ENGINEERS DRAWINGS)

CASCADE SWALE CONNECTED TO EXISTING SW (REFER ENGINEERS DRAWINGS)

REDEVELOPED SKATE PARK (BY OTHERS)

WALL & VEGETATION REMOVAL EARTH SHAPING & PLANTING

BASKETBALL FULL COURT EXPANSION

JUNIOR & SENIOR PLAYGROUND (REFER PLAYGROUND DRAWINGS)

PLAZA

EXISTING TENNIS COURTS

YOUTH CENTRE REDEVELOPMENT (BY OTHERS)

CAR PARK RECONFIGURATION (BY OTHERS)

VEHICLE ACCESS ENTRY TO 15 CHARTWELL AVE

STORMWATER SWALE (REFER ENGINEERS DRAWINGS)

RECREATION AREA (REFER PLAYGROUND DRAWINGS)

MITIGATION PLANTING AREA

SWALE PATH (REFER ENGINEERS DRAWINGS)

VEGETATION REMOVAL 1.8m CONCRETE PATH

1.8m CONCRETE PATH & SWALE

2m WIDE CONCRETE PATH

CHARTWELL AVE SHOPS SERVICE LANE ACCESS 1.8m WIDE CONCRETE PATH

EDGEWORTH RD

EDGEWORTH RD ENTRANCE PATH WIDENED TO 1.8m

REMOVE TREE STUMP

EARTH SHAPING TO ACHIEVE 1:8 GRADE

2m WIDE CONCRETE PATH

EARTH SHAPING

1.8m CONCRETE PATH

EARTH BUND

2m WIDE CONCRETE PATH

EXISTING SPACENET

RAMILLES PLACE ENTRANCE 1.8m CONCRETE PATH

CHARTWELL AVE